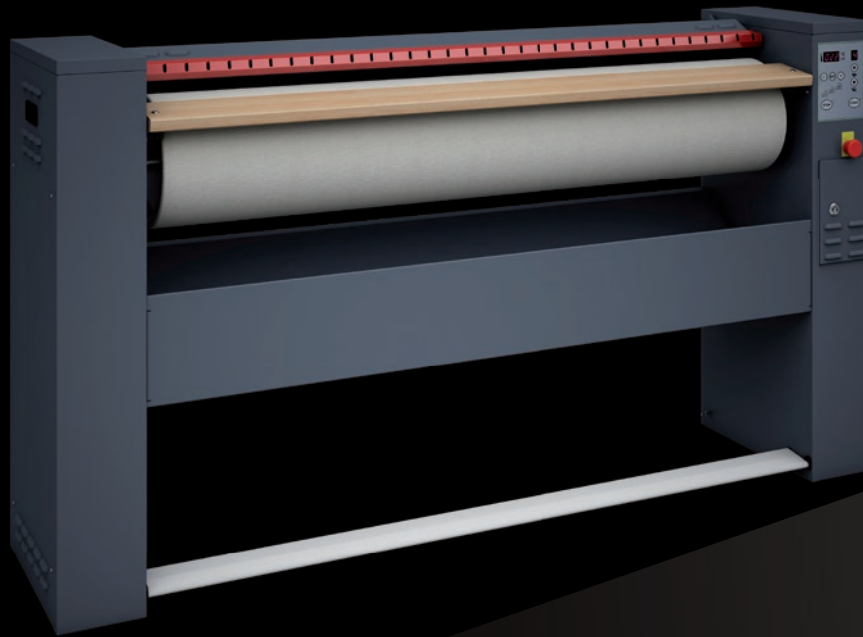




Maximum Performance



I 25, I 30

FEATURES AND BENEFITS

- Attractive design
- Standard finger guard protection
- When unattended, the device shuts off automatically
- Reduced number of mechanical and moving parts for a lower maintenance cost
- Homogeneous ironing pressure to ensure top ironing quality
- PID controlled temperature regulation offering better temperature distribution and reduced energy consumption
- Long-life heating elements

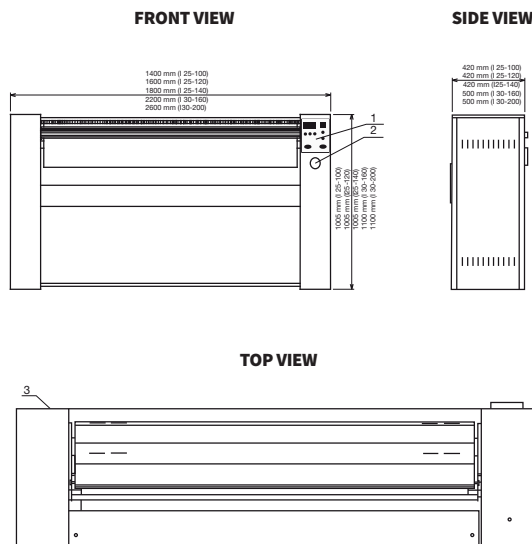
- Anodised extruded aluminium profile avoiding temperature drop and ensuring top ironing quality
- All vital components are easily accessible
- Start/stop pedal
- Standard M-Aramid top cover sheet
- Backside of the basin is insulated with 25mm ceramic wool - no energy waste

OPTIONS

- Frequency inverter enabling variable ironing speed
- Fan exhaust removing humid air from the ironer (I25-140, I30-160, I30-200)

PROFESSIONAL CHEST HEATED IRONERS

TYPE		I25-100	I25-100V*	I25-120	I25-120V*	I25-140	I25-140V*	I25-140AV**	I30-160	I30-160AV**	I30-200AV**
ROLLER DIMENSIONS											
Length	mm	1000	1000	1200	1200	1400	1400	1400	1600	1600	2000
Diameter	mm	250	250	250	250	250	250	250	290	290	290
Capacity	kg/h	30	30	35	35	40	40	40	32-50	32-50	52-79
Relative humidity	%	10-15	10-15	10-15	10-15	10-15	10-15	20-25	20-25	20-25	40-45
Type of heating		Electric	Electric	Electric	Electric	Electric	Electric	Electric	Electric	Electric	Electric
Speed	m/min	3.9	2-4	3.9	2-4	3.9	2-4	2-4	3.9	2-4	2-4
VOLTAGE/HZ/PHASE CIRCUIT BREAKER											
1x230V 50Hz	A	25	25	32	32	32	32	40	N/A	N/A	N/A
3x230V 50Hz	A	16	16	16	16	25	25	25	40	40	50
1x230V 60Hz	A	25	25	32	32	32	32	40	N/A	N/A	N/A
3x230V 60Hz	A	16	16	16	16	25	25	25	40	40	50
3x400V 50Hz	A	10	10	10	10	16	16	16	25	25	32
3x400V 60Hz	A	10	10	10	10	16	16	16	25	25	32
3x440V 60Hz	A	10	10	10	10	16	16	16	25	25	32
3x480V 60Hz	A	10	10	10	10	16	16	16	16	16	25
Heating power	kW	5	5	6	6	7	7	8.4	13.2	13.2	16.8
Motor rated input	kW	0.18	0.18	0.18	0.18	0.18	0.18	0.215	0.48	0.67	0.67
Total electric supply	kW	5.18	5.18	6.18	6.18	7.18	7.18	8.615	13.68	13.87	17.47
Exhaust diameter	mm	N/A	N/A	N/A	N/A	N/A	N/A	55	60	60	60
DIMENSIONS											
Height	mm	1005	1005	1005	1005	1005	1005	1005	1100	1100	1100
Width	mm	1400	1400	1600	1600	1800	1800	1800	2200	2200	2600
Depth	mm	420	420	420	420	420	420	420	500	500	500
TRANSPORT DATA											
Height	mm	1150	1150	1150	1150	1150	1150	1150	1260	1260	1260
Width	mm	1480	1480	1680	1680	1880	1880	1880	2280	2280	2690
Depth	mm	500	500	500	500	500	500	500	590	590	590
Net weight	kg	110	110	118	118	135	135	135	262	262	294
Gross weight	kg	119	119	130	130	154	154	154	300	300	350
*Option V = Variable speed & adjustable temperature											
**Option AV = Variable speed, adjustable temperature, & suction fan											



1. Control panel
2. Emergency stop button
3. Main switch and power supply

TO LEARN MORE, OR TO FIND A DISTRIBUTOR IN YOUR AREA, VISIT UNIMAC.COM
ALLIANCE LAUNDRY SYSTEMS - SHEPARD ST, RIPON WI 54971 - +1 800 587 5458

Consult your UniMac® distributor for details. For the most accurate information, the installation guide should be used for all design and construction purposes. Due to continuous product improvements, design and specifications subject to change without notice. The quality management systems at Alliance Laundry Systems® Ripon facility has been registered to ISO 9001:2008.

©2018 Alliance Laundry Systems LLC.

UniMac® by Alliance Laundry Systems