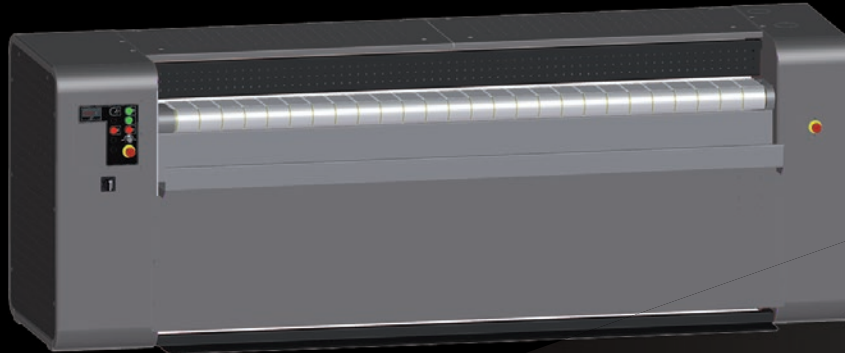




Maximum Performance



## ACL800

### FEATURES AND BENEFITS

#### CHEST

- Single piece super flexible laser welding chest have 180-206° wrap up contact to rolls
- Self-adjusted chest applies pressure always equally over entire width and length of the roll. To make linen being ironed equal quality.
- Heated by circulated thermal oil moving in the chest. It makes the temperature even along full chest width. No trouble of overheated spots.
- Self-contained thermal oil heating and circulation system offers accurate temperature control, easy installation and start up
- Steam heated by steam injection directly into the chest

#### DELIVERY

- Rear return to connect folder when necessary
- Front and rear return optional to be flexible to suit the laundry flow

#### ROLL

- Perforated steel roll with under springing and polyester felt 800 gr/m<sup>2</sup> padding
- Suction through the roll to ventilate moisture
- Fully enclosed planetary gearbox mounted directly onto the roll
- Variable speed by frequency inverter drive

#### CONTROL

- Simple readout control to set temperature and speed manually
- Optional PLC touch screen with 50 programs. Speed regulation and modulating bunner included.

#### OPTIONS

- Unique high ventilation chest for 25% higher output (not for steam heating)
- Higher ironing speed
- Longer feeding table
- Foot pedal
- M-Aramid padding

**CHEST HEATED IRONERS - ONE ROLL**

| TYPE                   |       | ACL800-17             | ACL800-20 | ACL800-22 | ACL800-25 | ACL800-30 | ACL800-33 |
|------------------------|-------|-----------------------|-----------|-----------|-----------|-----------|-----------|
| Roll diameter          | mm    | 800                   | 800       | 800       | 800       | 800       | 800       |
| Working width          | mm    | 1750                  | 2000      | 2200      | 2500      | 3000      | 3300      |
| Ironing speed          | m/min | 3-12                  | 3-12      | 3-12      | 3-12      | 3-12      | 3-12      |
| High ironing speed     | m/min | 3-16                  | 3-16      | 3-16      | 3-16      | 3-16      | 3-16      |
| Fan motor              | kW    | 0,75                  | 0,75      | 0,75      | 0,75      | 0,75      | 0,75      |
| Roll motor             | kW    | 1,5                   | 1,5       | 1,5       | 1,5       | 1,5       | 1,5       |
| Roll motor, high speed | kW    | 2,2                   | 2,2       | 2,2       | 2,2       | 2,2       | 2,2       |
| Exhaust diameter       | mm    | Ø125                  | Ø125      | Ø125      | Ø125      | Ø125      | Ø125      |
| Hydraulic pump motor   | kW    | 0,37                  | 0,37      | 0,37      | 0,37      | 0,37      | 0,37      |
| Oil circulation pump   | kW    | 2,2                   | 2,2       | 2,2       | 2,2       | 2,2       | 2,2       |
| Voltage                |       | 3x380-415V +TN-C 50Hz |           |           |           |           |           |

#### GAS HEATING

|  |       |      |      |      |      |      |      |
|--|-------|------|------|------|------|------|------|
| Gas connection                           | inch  | ¾"   | ¾"   | ¾"   | ¾"   | ¾"   | ¾"   |
| Gas pressure                             | mbar  | 20   | 20   | 20   | 20   | 20   | 20   |
| Gas consumption                          | kW    | 69   | 80   | 87   | 99   | 126  | 131  |
| Heat exchanger evacuation                | mm    | Ø125 | Ø125 | Ø125 | Ø125 | Ø125 | Ø125 |
| Ironing capacity @moisture retention 50% | kg/hr | 152  | 164  | 186  | 200  | 230  | 250  |

#### STEAM HEATING

|   |       |      |      |      |      |      |      |
|---|-------|------|------|------|------|------|------|
| Steam pressure                            | bar   | 6-12 | 6-12 | 6-12 | 6-12 | 6-12 | 6-12 |
| Steam connection                          | inch  | ¾"   | ¾"   | ¾"   | ¾"   | ¾"   | ¾"   |
| Condens connection                        | inch  | ¾"   | ¾"   | ¾"   | ¾"   | ¾"   | ¾"   |
| Steam consumption @ 10bar                 | kg    | 98   | 113  | 123  | 140  | 169  | 186  |
| Ironing capacity @ moisture retention 50% | kg/hr | 136  | 147  | 167  | 180  | 207  | 225  |

#### ELECTRIC HEATING

|   |       |     |     |     |     |     |     |
|---|-------|-----|-----|-----|-----|-----|-----|
| Heating element                           | kW    | 60  | 60  | 60  | 75  | 90  | 90  |
| Ironing capacity @ moisture retention 50% | kg/hr | 152 | 164 | 186 | 200 | 230 | 250 |

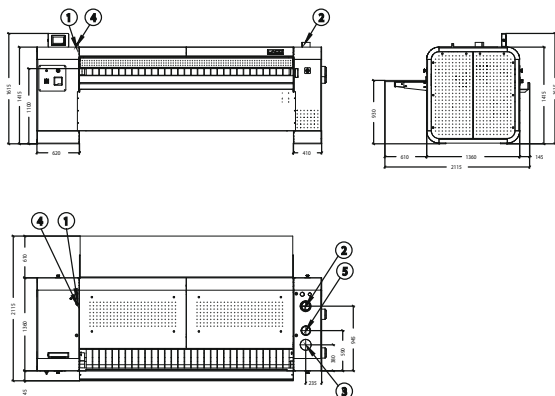
#### DIMENSIONS

|   |    |      |      |      |      |      |      |
|---|----|------|------|------|------|------|------|
| Width                                   | mm | 2910 | 3160 | 3360 | 3660 | 4160 | 4460 |
| Depth (table open = pass-through model) | mm | 2035 | 2035 | 2035 | 2035 | 2035 | 2035 |
| Height                                  | mm | 1415 | 1415 | 1415 | 1415 | 1415 | 1415 |
| Net weight                              | kg | 2000 | 2200 | 2600 | 2800 | 3100 | 3400 |

#### SHIPPING DIMENSIONS

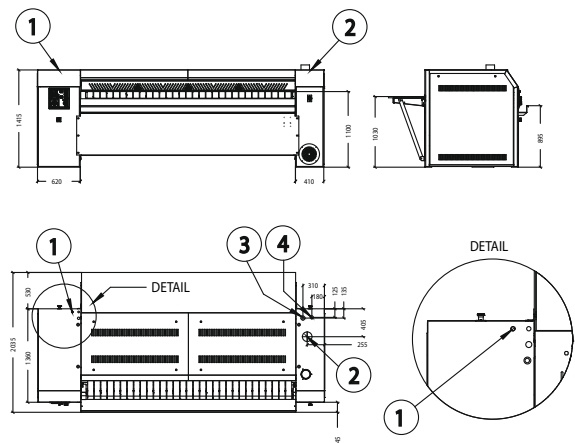
|              |    |      |      |      |      |      |      |
|--------------|----|------|------|------|------|------|------|
| Width        | mm | 3010 | 3260 | 3460 | 3760 | 4260 | 4560 |
| Depth        | mm | 1755 | 1755 | 1755 | 1755 | 1755 | 1755 |
| Height       | mm | 1515 | 1515 | 1515 | 1515 | 1515 | 1515 |
| Gross weight | kg | 2030 | 2230 | 2630 | 2830 | 3130 | 3430 |

#### ACL800 - REAR RETURN - ELECTRIC HEATING REAR RETURN - GAS HEATING



1. Electrical connection
2. Vapour outlet
3. Suction by feedbands
4. Gas inlet
5. Gas outlet

#### ACL800 - REAR RETURN - STEAM HEATING



1. Electrical connection
2. Vapour outlet
3. Steam inlet
4. Steam outlet

**TO LEARN MORE, OR TO FIND A DISTRIBUTOR IN YOUR AREA, VISIT UNIMAC.COM**  
**ALLIANCE LAUNDRY SYSTEMS - SHEPARD ST, RIPON WI 54971 - +1 800 587 5458**

Consult your UniMac® distributor for details. For the most accurate information, the installation guide should be used for all design and construction purposes. Due to continuous product improvements, design and specifications subject to change without notice. The quality management systems at Alliance Laundry Systems' Ripon facility has been registered to ISO 9001:2008.

©2018 Alliance Laundry Systems LLC.

UniMac® by Alliance Laundry Systems