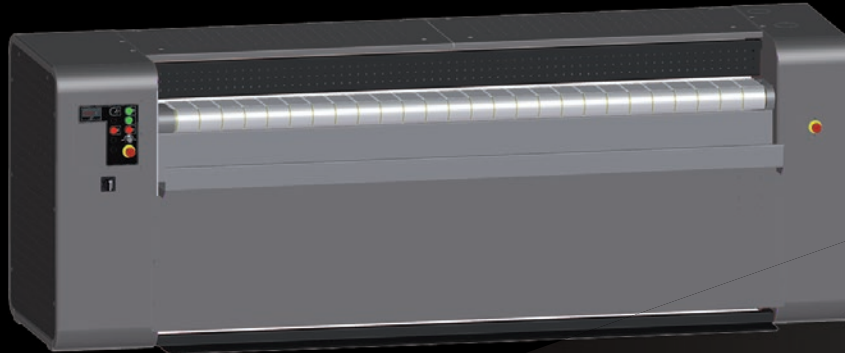




**Maximum Performance**



## ACL600

### FEATURES AND BENEFITS

#### CHEST

- Single piece super flexible laser welding chest have 180-206° wrap up contact to rolls
- Self-adjusted chest applies pressure always equally over entire width and length of the roll. To make linen being ironed equal quality.
- Heated by circulated thermal oil moving in the chest. It makes the temperature even along full chest width. No trouble of overheated spots.
- Self-contained thermal oil heating and circulation system offers accurate temperature control, easy installation and start up
- Steam heated by steam injection directly into the chest

#### DELIVERY

- Rear return to connect folder when necessary
- Front and rear return optional to be flexible to suit the laundry flow

#### ROLL

- Perforated steel roll with under springing and polyester felt 800 gr/m<sup>2</sup> padding
- Suction through the roll to ventilate moisture
- Fully enclosed planetary gearbox mounted directly onto the roll
- Variable speed by frequency inverter drive

#### CONTROL

- Simple readout control to set temperature and speed manually
- Optional PLC touch screen with 50 programs. Speed regulation and modulating burner included.

#### OPTIONS

- Unique high ventilation chest for 25% higher output (not for steam heating)
- Higher ironing speed
- Longer feeding table
- Foot pedal
- M-Aramid padding

**CHEST HEATED IRONERS - ONE ROLL**

TYPE		ACL600-17	ACL600-20	ACL600-22	ACL600-25	ACL600-30	ACL600-33
Roll diameter	mm	600	600	600	600	600	600
Working width	mm	1750	2000	2200	2500	3000	3300
Ironing speed	m/min	1,5 - 6,5	1,5 - 6,5	1,5 - 6,5	1,5 - 6,5	1,5 - 6,5	1,5 - 6,5
High ironing speed	m/min	3,5 - 14,0	3,5 - 14,0	3,5 - 14,0	3,5 - 14,0	3,5 - 14,0	3,5 - 14,0
Fan motor	kW	0,75	0,75	0,75	0,75	0,75	0,75
Roll motor	kW	1,5	1,5	1,5	1,5	1,5	1,5
Roll motor, high speed	kW	2,2	2,2	2,2	2,2	2,2	2,2
Exhaust diameter	mm	Ø125	Ø125	Ø125	Ø125	Ø125	Ø125
Hydraulic pump motor	kW	0,37	0,37	0,37	0,37	0,37	0,37
Oil circulation pump	kW	2,2	2,2	2,2	2,2	2,2	2,2
Voltage		3x380-415V +TN-C 50Hz					
<b>GAS HEATING</b>							
Gas connection	inch	¾"	¾"	¾"	¾"	¾"	¾"
Gas pressure	mbar	20	20	20	20	20	20
Gas consumption	kW	52	57	66	73	84	92
Heat exchanger evacuation	mm	Ø125	Ø125	Ø125	Ø125	Ø125	Ø125
Ironing capacity @moisture retention 50%	kg/hr	100	109	126	140	160	175
<b>STEAM HEATING</b>							
Steam pressure	bar	6-12	6-12	6-12	6-12	6-12	6-12
Steam connection	inch	¾"	¾"	¾"	¾"	¾"	¾"
Condens connection	inch	¾"	¾"	¾"	¾"	¾"	¾"
Steam consumption @ 10bar	kg	77	83	96	107	123	134
Ironing capacity @ moisture retention 50%	kg/hr	90	98	113	126	144	157
<b>ELECTRIC HEATING</b>							
Heating element	kW	45	45	45	50	60	75
Ironing capacity @ moisture retention 50%	kg/hr	100	109	126	140	160	175
<b>DIMENSIONS</b>							
Width	mm	2725	2975	3175	3475	3975	4275
Depth (table open = pass-through model)	mm	1900	1900	1900	1900	1900	1900
Height	mm	1395	1395	1395	1395	1395	1395
Net weight	kg	1800	2000	2200	2400	2600	2900
<b>SHIPPING DIMENSIONS</b>							
Width	mm	2825	3075	3275	3575	4075	4375
Depth	mm	1595	1595	1595	1595	1595	1595
Height	mm	1495	1495	1495	1495	1495	1495
Gross weight	kg	1830	2030	2230	2430	2630	2930

**TO LEARN MORE, OR TO FIND A DISTRIBUTOR IN YOUR AREA, VISIT UNIMAC.COM**  
**ALLIANCE LAUNDRY SYSTEMS - SHEPARD ST, RIPON WI 54971 - +1 800 587 5458**

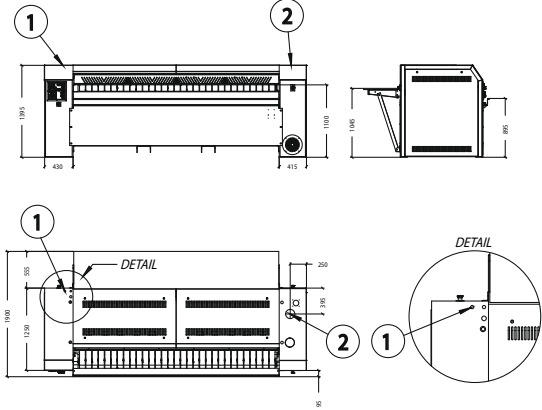
Consult your UniMac® distributor for details. For the most accurate information, the installation guide should be used for all design and construction purposes. Due to continuous product improvements, design and specifications subject to change without notice. The quality management systems at Alliance Laundry Systems' Ripon facility has been registered to ISO 9001:2008.

©2018 Alliance Laundry Systems LLC.

UniMac® by Alliance Laundry Systems

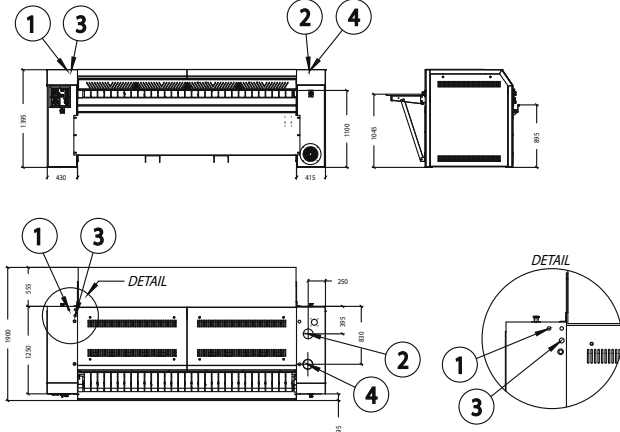
# ACL600

## ACL600 - REAR RETURN - ELECTRIC HEATING



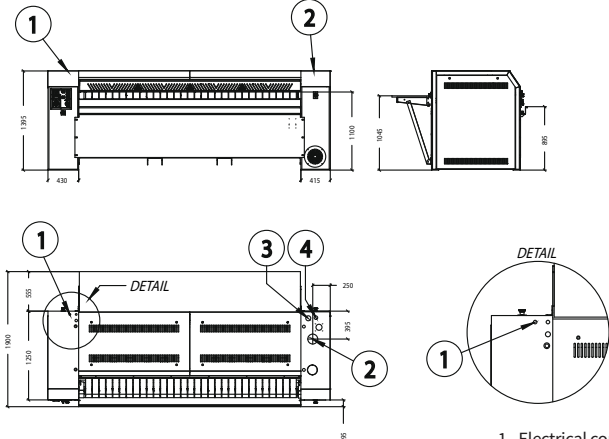
- 1. Electrical connection
- 2. Vapour outlet

## ACL600 - REAR RETURN - GAS HEATING



- 1. Electrical connection
- 2. Vapour outlet
- 3. Gas inlet
- 4. Gas outlet

## ACL600 - REAR RETURN - STEAM HEATING



- 1. Electrical connection
- 2. Vapour outlet
- 3. Steam inlet
- 4. Steam outlet

**TO LEARN MORE, OR TO FIND A DISTRIBUTOR IN YOUR AREA, VISIT UNIMAC.COM**  
**ALLIANCE LAUNDRY SYSTEMS - SHEPARD ST, RIPON WI 54971 - +1 800 587 5458**

Consult your UniMac® distributor for details. For the most accurate information, the installation guide should be used for all design and construction purposes. Due to continuous product improvements, design and specifications subject to change without notice. The quality management systems at Alliance Laundry Systems' Ripon facility has been registered to ISO 9001:2008.

©2018 Alliance Laundry Systems LLC.

UniMac® by Alliance Laundry Systems