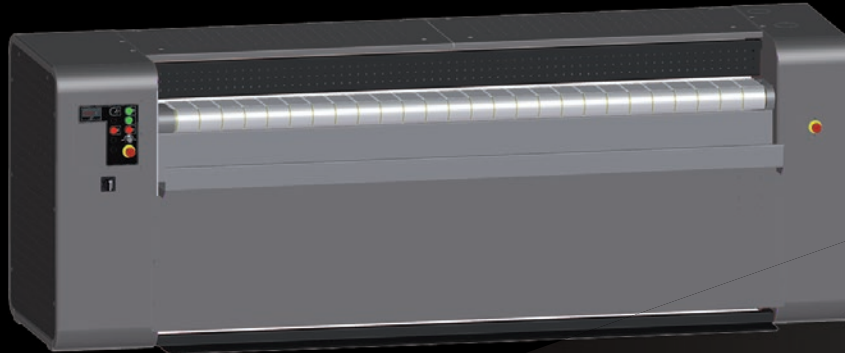




Maximum Performance



ACL500

FEATURES AND BENEFITS

CHEST

- Single piece super flexible laser welding chest have 180-206° wrap up contact to rolls
- Self-adjusted chest applies pressure always equally over entire width and length of the roll. To make linen being ironed equal quality.
- Heated by circulated thermal oil moving in the chest. It makes the temperature even along full chest width. No trouble of overheated spots.
- Self-contained thermal oil heating and circulation system offers accurate temperature control, easy installation and start up
- Steam heated by steam injection directly into the chest

DELIVERY

- Front return to save operation space and one person to operate
- Rear return to connect folder when necessary
- Front and rear return optional to be flexible to suit the laundry flow

ROLL

- Perforated steel roll with under springing and polyester felt 800 gr/m² padding
- Suction through the roll to ventilate moisture
- Fully enclosed planetary gearbox mounted directly onto the roll
- Variable speed by frequency inverter drive

CONTROL

- Simple readout control to set temperature and speed manually
- Optional PLC touch screen with 50 programs. Speed regulation and modulating bunner included.

OPTIONS

- Unique high ventilation chest for 25% higher output (not for steam heating)
- Higher ironing speed
- Longer feeding table
- Foot pedal
- M-Aramid padding

CHEST HEATED IRONERS - ONE ROLL

TYPE		ACL500-17	ACL500-20	ACL500-22	ACL500-25	ACL500-30	ACL500-33
Roll diameter	mm	500	500	500	500	500	500
Working width	mm	1750	2000	2200	2500	3000	3300
Ironing speed	m/min	1,5-5,5	1,5-5,5	1,5-5,5	1,5-5,5	1,5-5,5	1,5-5,5
High ironing speed	m/min	1,5-12	1,5-12	1,5-12	1,5-12	1,5-12	1,5-12
Fan motor	kW	0,25	0,25	0,25	0,25	0,25	0,25
Roll motor	kW	0,37	0,37	0,37	0,37	0,37	0,37
Roll motor, high speed	kW	1,5	1,5	1,5	1,5	1,5	1,5
Exhaust diameter	mm	Ø75	Ø75	Ø75	Ø75	Ø75	Ø75
Hydraulic pump motor	kW	0,37	0,37	0,37	0,37	0,37	0,37
Oil circulation pump	kW	2,2	2,2	2,2	2,2	2,2	2,2
Voltage		3x380-415V +TN-C 50Hz					
GAS HEATING							
Gas connection	inch	½"	½"	½"	½"	½"	½"
Gas pressure	mbar	20	20	20	20	20	20
Gas consumption	kW	34	39	43	50	60	65
Heat exchanger evacuation	mm	Ø90	Ø90	Ø90	Ø90	Ø90	Ø90
Ironing capacity @moisture retention 50%	kg/hr	65	75	82	95	115	125
STEAM HEATING							
Steam pressure	bar	6-12	6-12	6-12	6-12	6-12	6-12
Steam connection	inch	¾"	¾"	¾"	¾"	¾"	¾"
Condens connection	inch	¾"	¾"	¾"	¾"	¾"	¾"
Steam consumption @ 10bar	kg	50	57	63	72	88	95
Ironing capacity @ moisture retention 50%	kg/hr	58	67	74	85	103	112
ELECTRIC HEATING							
Heating element	kW	30	30	35	40	45	45
Ironing capacity @ moisture retention 50%	kg/hr	65	75	82	95	115	125
DIMENSIONS							
Width	mm	2600	2850	3050	3350	3850	4150
Depth (table open = pass-through model)	mm	1715	1715	1715	1715	1715	1715
Height	mm	1200	1200	1200	1200	1200	1200
Net weight	kg	1000	1200	1270	1350	1475	1600
SHIPPING DIMENSIONS							
Width	mm	2700	2950	3150	3450	3950	4250
Depth	mm	1195	1195	1195	1195	1195	1195
Height	mm	1300	1300	1300	1300	1300	1300
Gross weight	kg	1030	1230	1300	1380	1505	1630

TO LEARN MORE, OR TO FIND A DISTRIBUTOR IN YOUR AREA, VISIT UNIMAC.COM
ALLIANCE LAUNDRY SYSTEMS - SHEPARD ST, RIPON WI 54971 - +1 800 587 5458

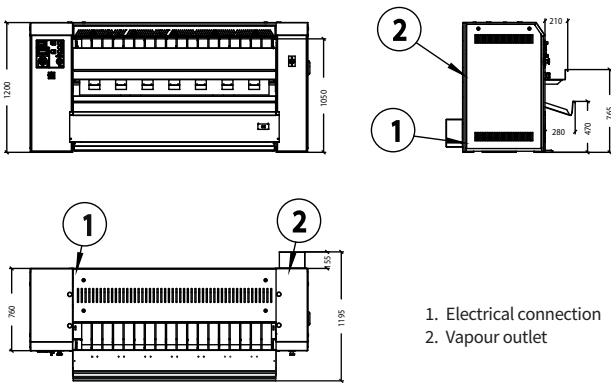
Consult your UniMac® distributor for details. For the most accurate information, the installation guide should be used for all design and construction purposes. Due to continuous product improvements, design and specifications subject to change without notice. The quality management systems at Alliance Laundry Systems' Ripon facility has been registered to ISO 9001:2008.

©2018 Alliance Laundry Systems LLC.

UniMac® by Alliance Laundry Systems

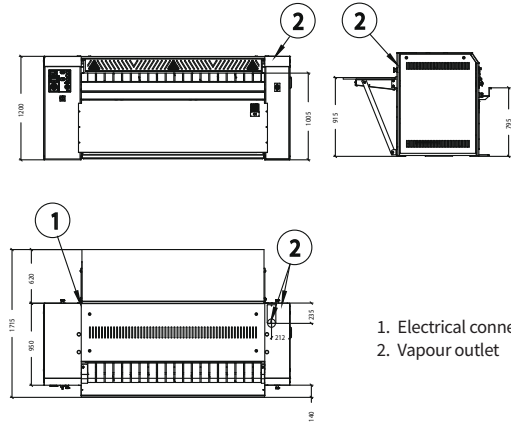
ACL500

ACL500 - FRONT RETURN - ELECTRIC HEATING



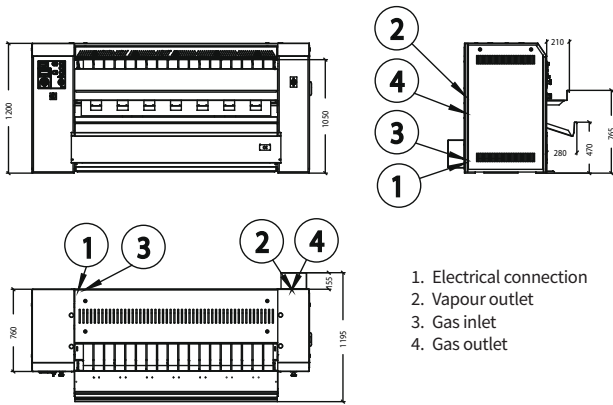
- 1. Electrical connection
- 2. Vapour outlet

ACL500 - REAR RETURN - ELECTRIC HEATING



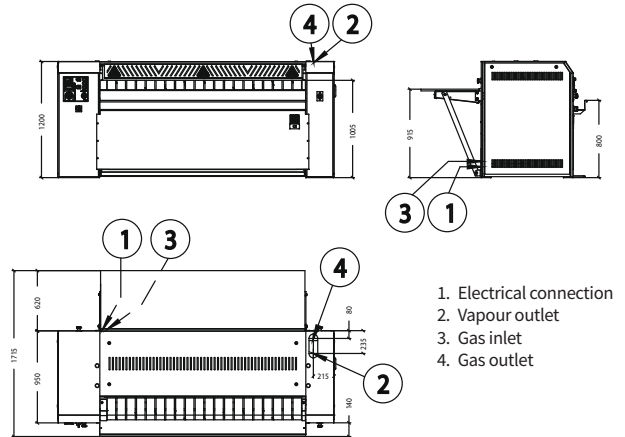
- 1. Electrical connection
- 2. Vapour outlet

ACL500 - FRONT RETURN - GAS HEATING



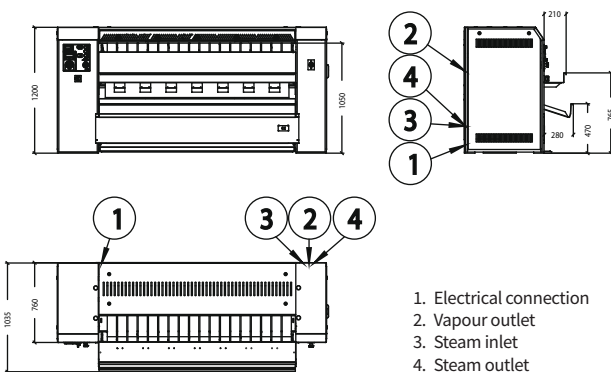
- 1. Electrical connection
- 2. Vapour outlet
- 3. Gas inlet
- 4. Gas outlet

ACL500 - REAR RETURN - GAS HEATING



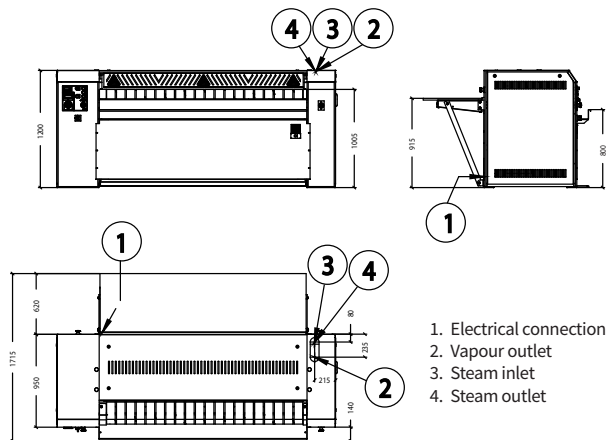
- 1. Electrical connection
- 2. Vapour outlet
- 3. Gas inlet
- 4. Gas outlet

ACL500 - FRONT RETURN - STEAM HEATING



- 1. Electrical connection
- 2. Vapour outlet
- 3. Steam inlet
- 4. Steam outlet

ACL500 - REAR RETURN - STEAM HEATING



- 1. Electrical connection
- 2. Vapour outlet
- 3. Steam inlet
- 4. Steam outlet

TO LEARN MORE, OR TO FIND A DISTRIBUTOR IN YOUR AREA, VISIT UNIMAC.COM
ALLIANCE LAUNDRY SYSTEMS - SHEPARD ST, RIPON WI 54971 - +1 800 587 5458

Consult your UniMac® distributor for details. For the most accurate information, the installation guide should be used for all design and construction purposes. Due to continuous product improvements, design and specifications subject to change without notice. The quality management systems at Alliance Laundry Systems' Ripon facility has been registered to ISO 9001:2008.

©2018 Alliance Laundry Systems LLC.

UniMac® by Alliance Laundry Systems